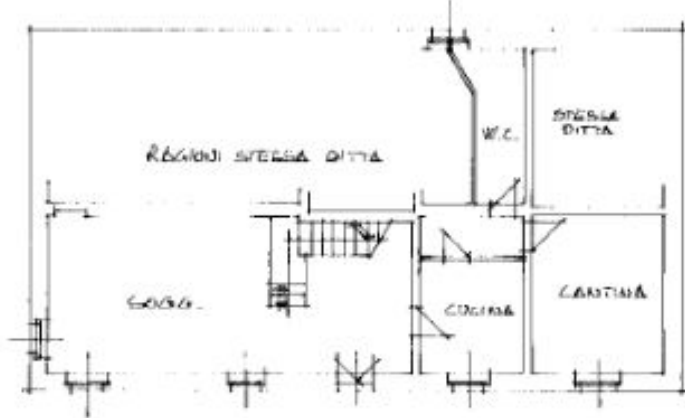
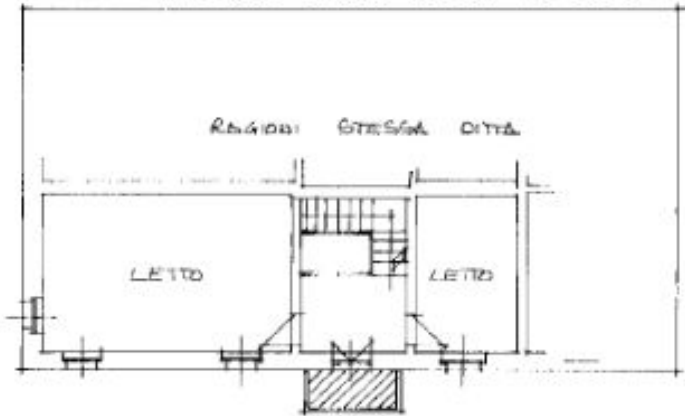


Il Planimetrie F. 45 S. 3:

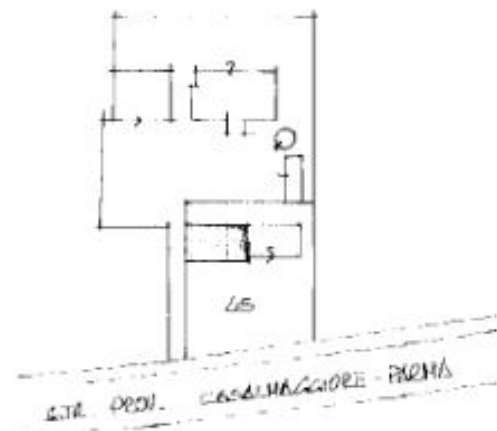
PIANTA PIANO TERRA H=3.15



PIANTA PIANO PRIMO H=3.25

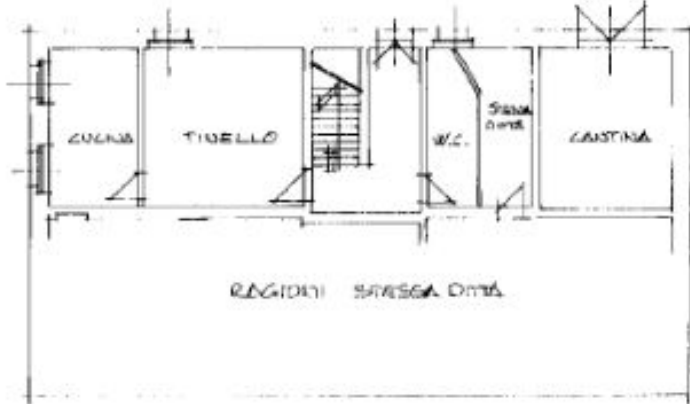


PLANIMETRIA 1:2000

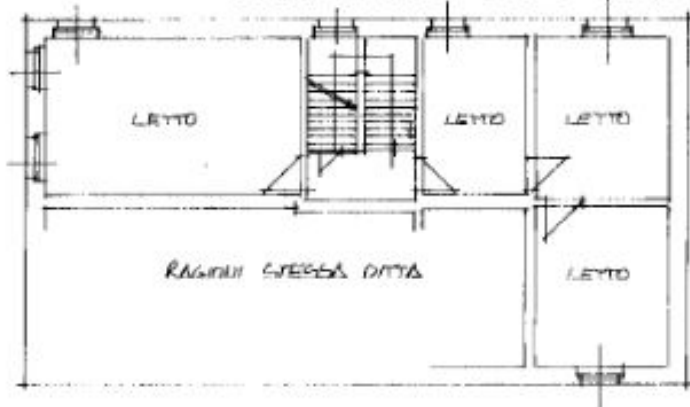


Il Planimetrie F. 45 S. 4:

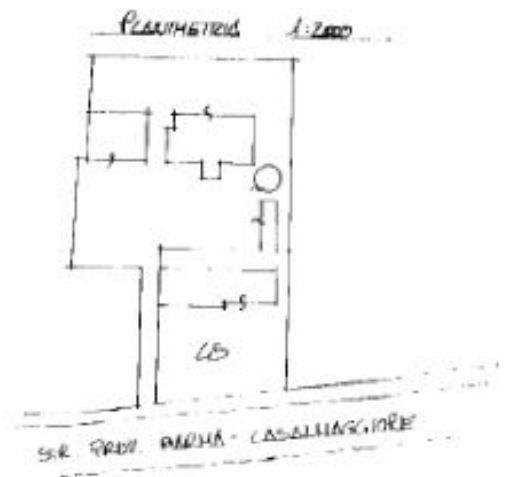
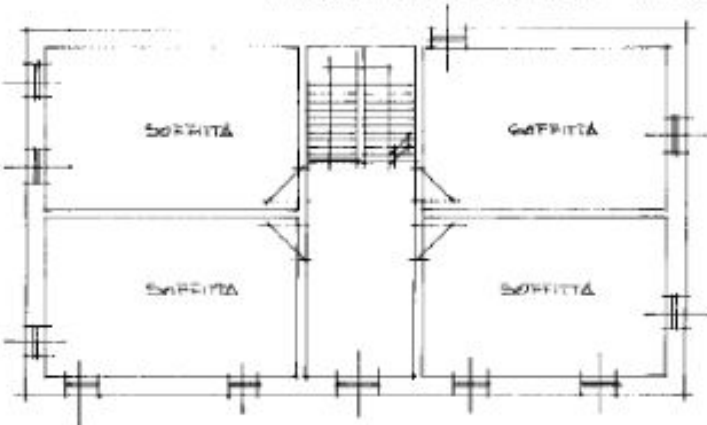
PIANTA PIANO TERRA H: 3.15



PIANTA PIANO PRIMO H: 3.25



PIANTA PIANO SECONDO H: 3.70



ORIENTAMENTO



SCALA DI 1:200